

Consultant HMDP at St Mark's



R Sim
TTSH





Childrens Play Area

Adults must be accompanied
by a child

London Borough of Brent Parks Service

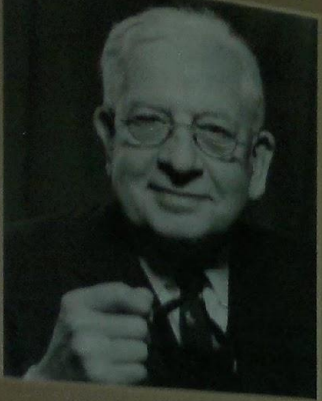


Telephone 020 8937 5619



The image features a photograph of a rectangular, orange-colored sign with black text. The sign is mounted on a metal post and is set against a background of green trees and a building. The sign's text reads: "STRICTLY NO", "RUNNING OR PLAYING", and "AT PLAYGROUND". The photograph is framed by a decorative border at the top, which includes a yellow star on the left, a purple and blue patterned area on the right, and a yellow brushstroke-like element. The left side of the entire image has a light-colored, wood-grain-like texture.

**STRICTLY NO
RUNNING OR PLAYING
AT PLAYGROUND**



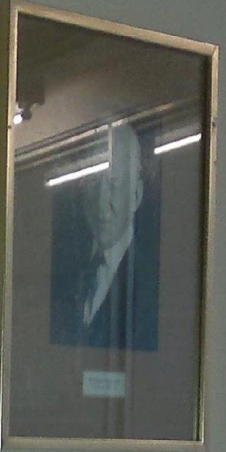
Dr. Kristina Newton Morgan
Surgeon 1980-88



Ron Givins
Surgeon 1988-98



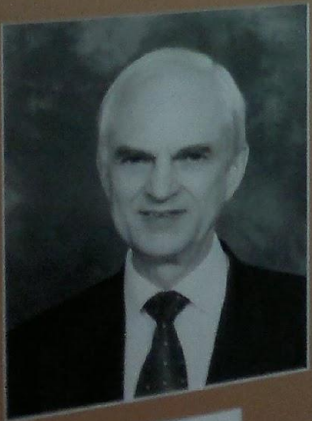
Ron Givins
Surgeon 1988-98



[Illegible]



[Illegible]



PROFESSOR JC TALBOT
PATHOLOGIST 1988-2004



PROFESSOR JC TALBOT
PATHOLOGIST 1988-2004



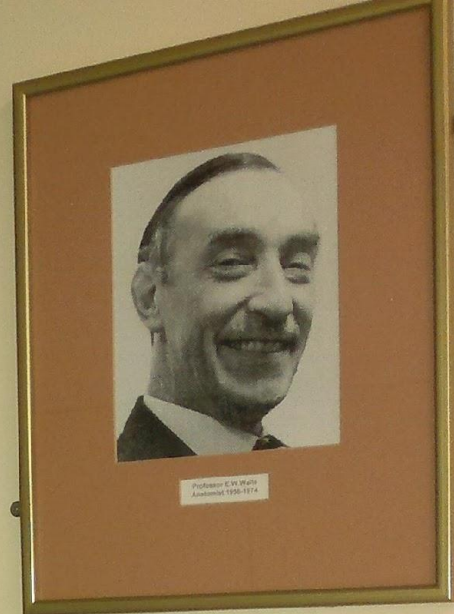
[Illegible]



[Illegible]



[Illegible]



THE SPECIALTY

David Henry Goodland, Surgeon, 1871 - 1942
 Goodland was considered 'a big head' in some circles, but his reputation was based on the numerous designs by him, and one of the best known contributions was a device to be used in the treatment of the eye. In contact with surgery, it was very difficult to find the person who would be happy to accept of new machines.

Diagram of a mechanical device, possibly a pump or engine, with various components labeled.

Robert Wilson Alington, Surgeon, 1889 - 1967
 Alington's paper on 'Surgery in 1917' was a very important one. It was the first of its kind, and it was a very important one. It was the first of its kind, and it was a very important one. It was the first of its kind, and it was a very important one.

William Alington, Surgeon, 1884 - 1918
 The personality of William Alington was developed by the surgeons of St. Mark's in the latter half of the 19th century. William Alington was particularly interested in the work of the surgeons of St. Mark's in the latter half of the 19th century. William Alington was particularly interested in the work of the surgeons of St. Mark's in the latter half of the 19th century.

ST. MARK'S FLOURISHES

Portrait of a man, likely a surgeon or medical professional, associated with St. Mark's.

Portrait of a man, likely a surgeon or medical professional, associated with St. Mark's.

Portrait of a man, likely a surgeon or medical professional, associated with St. Mark's.

Portrait of a man, likely a surgeon or medical professional, associated with St. Mark's.

ST. MARK'S FLOURISHES

Portrait of a man, likely a surgeon or medical professional, associated with St. Mark's.

Portrait of a man, likely a surgeon or medical professional, associated with St. Mark's.

ST. MARK'S FLOURISHES

Portrait of a man, likely a surgeon or medical professional, associated with St. Mark's.

Portrait of a man, likely a surgeon or medical professional, associated with St. Mark's.

ST. MARK'S FLOURISHES

Portrait of a man, likely a surgeon or medical professional, associated with St. Mark's.

Portrait of a man, likely a surgeon or medical professional, associated with St. Mark's.

TO F. SALMON, ESQ.,*

Founder of St. Mark's Hospital, City Road, London.

F ortune is fickle—fame a fleeting toy,
R eward of skill few mortals e'er enjoy ;
E nvy detracts, and scandal vilifies,
D isease attacks and medicine defies,
E 'en strong men bow, for pain severely tries ;
R ejoice then sufferer, here you've found a friend,
I n very deed, he stoops,—to him attend,
C onfide in him, Heaven's blessing to ensue,
K eep up your heart, he'll work a perfect cure.

S oaring aloft this man of Science see,
A nd mark his care for poor humanity ;
L ong may he live t'enjoy the fame he's won,
M ay peace and quiet gild his setting sun ;
O n Heaven, his hopes be firmly fixed and die,
N or fail of his reward above the sky.

* The Author having been successfully treated for a painful disease, desires thus publicly to acknowledge his sense of the skill and kindness of the gentleman referred to.

A poem to Frederick Salmon from a grateful patient.

St Mark's Hospital Christmas Show




Thursday 20th December, Himsworth Hall, 6.30pm Doors Open.

Tickets :£14.50 incl Dinner & Show BYOB

CONTACT: Nesta x4003 or Sister Denise x4360

FIRE WALK

forCrohns 

Do you have a **BURNING** desire
to **WALK** across hot coal!?

The forCrohns Fire Walk is a fun and exciting event, giving you, as an individual or as a team, the opportunity to get sponsored to walk across hot coal in a totally safe way!

JOIN US ON
THURSDAY 4TH JULY 2013

at the Comfort Inn Hotel, Harrow, HA1 2NT

You need to commit to raise minimum sponsorship of £150 if you register as an individual, or £100 per person if you register as a team of 5 or more.

Get your friends or colleagues involved, set up your Justgiving page and get ready to challenge yourself!

Arrive at 7.30pm, briefing from 8pm promptly, Firewalk begins at 9.15pm.

To register, go to

<http://www.forcrohns.org/firewalk.html>

info@forcrohns.org | 020 8954 0277 | www.forcrohns.org
charity number 1129871

forCrohns

HOSPITAL STAYS OF SMOKING AND ADOPTIVELY SMOKING INFLUENCED
BETWEEN TRIANGULAR FOLLOWING COLONIAL STAGES

This information is to be seen by you and other health professionals involved in treatment. (National Recovery / Recovery) within their own capacity.

(Delimited) Suppliers, Manufacturers, and Customers/Processors, Retailers, Wholesalers, Franchises, Distributors, and Managers.

Enhanced Recovery
Symposium

Certificate

Dr. Richard S. ...

Received January 10, 2003
 17000-0000

1999

Aug 9

Professor Martin Harnett
Queen's University

**St Mark's Management of
Complex Colorectal Cancer**



Friday 24th May 2013 - St Mark's Hospital

Roche Products Ltd



Olympus



St Mark's Academic Institute
Telephone: 020 8253 4040 / 4048 Fax: 020 8253 4039
or E-mail: info@stmarks.ac
www.stmarks.ac

Dr Richard Sim

Tan Tock Seng Hospital



Certificate

This is to certify that

Dr Richard Sim

attended

St Mark's Hospital & Academic Institute

Management of Complex Colorectal Cancer
24th May 2013

1 day attended

Mr JT Jenkins
Course Organizer



Certificate

This is to certify that

Dr Richard Sim

attended

St Mark's Hospital & Academic Institute

Safety, Leadership & Innovation in Colorectal Surgery
23rd May 2013

1 day attended

Professor Robin Kennedy
Course Organiser

Dr Richard Sim

Tan Tock Seng Hospital



SLIC Course - Safety,
Leadership & Innovation in
Colorectal Surgery
23rd May 2013

St. Mark's Hospital & Academic Institute

Dr Richard Sim

Singapore

Postgraduate Teaching Term
May to June 2013



The North West London Hospitals NHS

Richard Sim
Postgraduate

Department
Surgery
Organisation
NWLH

Card No 0011035983









Our survival rates are among
the best in the country.
6th out of 145 Trusts in England
4th in London*

*measured against the summary
hospital-level mortality indicator





If you have private health insurance or would like affordable private healthcare you can choose to be treated privately without moving hospital.

TRUSTPLUS is the private patients unit for North West London Hospitals NHS Trust. Dedicated to providing excellence in private healthcare, TRUSTPLUS combines the comfort and convenience of private healthcare with the safety and security of the NHS.

Why Choose TRUSTPLUS?

- + Consultant led care by a consultant of your choice
- + Consultants and their specialist teams available 24 / 7
- + Level 3 Intensive Care Unit
- + Latest diagnostic procedures and imaging equipment
- + Large private en suite rooms with panoramic views
- + 3 course à la carte menu
- + Private car parking
- + Flexible visiting hours, one night stay for a relative
- + Choice of morning newspaper, flatscreen TV and WiFi access

For further information or to arrange a tour





The North

BUILDING WORLD-CLASS OPERATING THEATRES FOR NORTH WEST

• LARGER • BRIGHTER • SAFER • STATE OF THE ART MEDICAL TECHNOLOGY • GLOBAL BEST PRACTICE, SERVING THE LOCAL

• DEDICATED EMERGENCY THEATRE • HEAD & NECK SURGICAL SUITE • ADVANCED LAPAROSCOPIC SUITE • VASCULAR HYBRID SUITE • ENHANCED TRAUMA



NHS

INHEALTH

NHS

MRI Suite
(B)

Together delivering
excellence in healthcare

MRI Suite (B)

INHEALTH

Together delivering
excellence in healthcare



St. Mark's Hospital
and Academic Institute

The North West London Hospitals **NHS**
NHS Trust

[Home](#) [Staff login](#) [Cookies](#) [Sitemap](#) [Contact us](#)

Welcome to St Mark's

Patient Information

Clinical Services

Latest News

Academic Information

Online shop

Your Location: [Home](#) > [Shop](#) > [Courses](#) > Postgraduate Teaching Term 2013

Categories



[Courses](#)
[Buy DVDs](#)
[E-Learning Centre](#)
[St Mark's Books](#)

Your Basket



Your basket is empty.

Sign In



Are you a new customer?

If so, please register here!

St Mark's Online Shop

Courses

Postgraduate Teaching Term 2013

Dates of Postgraduate Teaching Term 2013:

- 21st January – 15th February 2013
- 13th May – 7th June 2013
- 7th October – 1st November 2013



For many years St Mark's Academic Institute has run highly prestigious teaching terms for intestinal Surgeons. This four week programme is suitable for surgeons with an interest in intestinal and colorectal disease. The programme includes lectures, open seminars, attending theatres and outpatient departments and the opportunity to spend time in the various hospital departments. There is also free time for personal study.

Now, due to popular demand a new parallel programme has been developed for gastroenterologists with a specific interest in luminal disease. This four week programme includes lectures, open seminars, ward rounds and the opportunity to observe complex endoscopic procedures. Applicants will be able to attend routine hospital meetings including Grand Rounds, Journal Club and Radiological and Pathological Reviews.

Cost £1850

Search Enter search term...

Study with us

There are a lot of courses available for 2013.

Book early to avoid disappointment.

[View our current courses](#)



Contact us

[Our full contact details](#) ♦
[Maps and directions](#) ♦
[Departments](#) ♦
[Staff details \(A-Z\)](#) ♦



Eleventh Frontiers in Intestinal and Colorectal Disease

[Frontiers course](#) ♦



Latest products

Recent releases of books and video are available here where you can also enrol on our highly acclaimed educational courses. [Visit our online shop](#) ♦



Welcome to St Mark's

Patient Information

Clinical Services

Latest News

Academic Information

Online shop

Your Location: Home

Categories



Courses

Buy DVDs

E-Learning Centre

St Mark's Books

Your Basket



Your basket is empty.

Your Account



Your Orders

Your Account

Your Products

Logout

St Mark's Online Shop

Your Products

Here is a list of videos and documents associated with items you have purchased through the shop. Click on the play button to view the video, or the green arrow to download the file.

Videos

Search

View

Video Ref Title

-  St Mark's Workshop on Anal Fistula 2011
-  Enhanced Recovery Symposium June 2011
-  Inflammatory Bowel Disease: Common Issues Discussed in Depth - 27th May 2011
-  Ninth Frontiers in Intestinal and Colorectal Disease 2011
-  Enhanced Recovery Symposium November 2011
-  Inflammatory Bowel Disease: Common Issues Discussed in Depth - March 2012
-  Anal Fistula Study Day March 2012
-  Watch St Mark's Grand Rounds (Free)
-  Tenth Frontiers in Intestinal and Colorectal Disease 2012
-  Management of Complex Colorectal Cancer 2012
-  Anal Fistula Study Day March 2013
-  Management of Complex Colorectal Cancer 2013

Documents

Search

Search

Enter search term...

Go

Study with us

There are a lot of courses available for 2013.

Book early to avoid disappointment.

View our current courses



Contact us

[Our full contact details](#)

[Maps and directions](#)

[Departments](#)

[Staff details \(A-Z\)](#)



Eleventh Frontiers in Intestinal and Colorectal Disease

[Frontiers course](#)



Latest products

Recent releases of books and video are available here where you can also enrol on our highly acclaimed educational courses. [Visit our online shop](#)



Intersphincteric Proctectomy - the first...



From
£20.00

St Mark's Hospital has just released the first high definition...

Colonoscopy - The DVD



From
£7.00

Dr Christopher Williams
The content of this DVD ROM is...

Narrow Band Imaging in the Colon



From
£4.00

Dr J East, Dr N Suzuki, Dr B Saunders
The video explains...

Complete Splenic Flexure Mobilisation



From
£9.00

Samar Al-Homoud, Robin Kennedy
Surgery at St. Mark's...

Delorme's Advancement Flap for Ano-Vaginal...



From
£7.00

Prof. R Phillips
The aim of this surgery is complete tumour...

Enhanced Recovery



From
£20.00

Mr R Kennedy
Enhanced recovery programmes have the potential...

Dysplasia in U.C.



From
£4.00

Dr N Arebi, Dr N Suzuki, Dr B Saunders
Contents: a visual...

Endoscopic Submucosal Dissection



From
£4.00

Dr N Suzuki, Dr B Saunders
The traditional way of treating...

Fistula in Ano



From
£9.00

Prof. R Phillips, Prof. C Bartram
This one hour documentary...

Enteral Feeding Tubes



From
£9.00

Dr S Gabe
Over the past 25 years, percutaneous endoscopic...

Gaining Length in Pouch Surgery



From
£7.00

Prof. R Phillips
Various issues regarding pouch construction...

Home Parenteral Nutrition



From
£9.00

Dr S Gabe
This DVD provides patients with a practical...

Laparoscopic High Anterior Resection



From
£20.00

Susana Ouro, Ian Jenkins, Robin Kennedy
Surgery at St. Mark's...

Polypectomy Training



From
£9.00

Dr B Saunders, Dr C Williams
This CDROM contains two major...

The 175th Anniversary of St Mark's...



From
£10.00

Available for the first time on DVD-ROM, the complete video...

House Advancement Flap



From
£7.00

Richard Guy
Anal stenosis is a disabling complication...

Insertion of Central Feeding Lines



From
£4.00

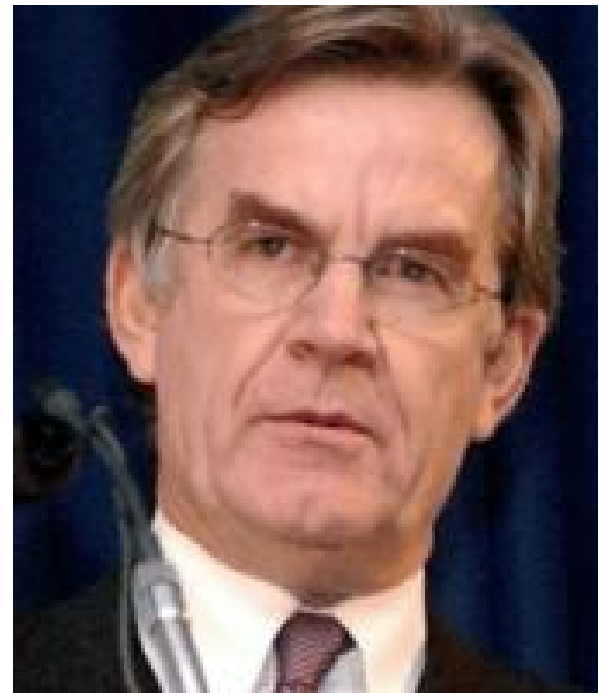
Dr S Gabe
This DVD presents two cases: the first, a patient...

Laparoscopic Right Hemicolectomy



From
£20.00

John Evans, Ian Jenkins, Robin Kennedy
Surgery at...



Prof. Robin Phillips MB BS MS FRCS
Director, Consultant Colorectal Surgeon

Enquiries - 020 8869 3390 or enquiries@trustplus.co.uk Private
secretary - Bharti Huda Private appointments - 020 8235 4251 or
bharti.huda@nhs.net Areas of Expertise: Colorectal Surgery

Anal fistula Complex cases that have 'gone wrong' elsewhere
Ileoanal pouches Polyposis syndromes Special/Research

Interests: Anal Fistula Inherited colorectal cancer syndromes

(Familial adenomatous polyposis, juvenile polyposis, Peutz-

Jeghers syndrome) Current NHS and/or University post(s): Consultant Surgeon, St

Mark's Hospital Clinical Director, St Mark's Hospital, Gastroenterology and

Emergency Surgery Professor of Colorectal Surgery, Imperial College Professional

and Personal profile: Professor Phillips is a Colorectal Surgeon with a tertiary
referral practice in inflammatory bowel disease, inherited cancer and anal fistula...



Prof. Robin Kennedy MBBS FRCS

Dean, Consultant Surgeon

Professor Robin Kennedy qualified at King's College Hospital, London in 1976 and obtained the FRCS in 1980. His postgraduate training was undertaken in the South West of England, France and New Zealand. As a Wellcome Trust Fellow he spent two years with Professor Henri Sarles in Marseille, this period of research on pancreatitis led to an MS thesis in 1987...



Mr. Ian Jenkins

Consultant Surgeon

Mr Ian Jenkins Consultant Surgeon Ian Jenkins was appointed as Consultant Surgeon to St. Mark's Hospital in 2008 following training in Coloproctology/ Surgical Oncology in the West of Scotland and St. Mark's Hospital. He studied at the University of Glasgow and spent two years in post-graduate research at the University Department of Surgery, Western Infirmary, Glasgow...



Prof. Sue Clark MA MB BChir MD FRCS(Gen Surg)
Consultant Colorectal Surgeon

Sue Clark trained in medicine at Cambridge University and St Thomas's Hospital Medical School in London. She embarked on specialist training in obstetrics and gynaecology, but after two years switched to general and colorectal surgery. Sue spent two years in full time research at St Mark's Hospital with an Imperial Cancer Research Fund fellowship...

